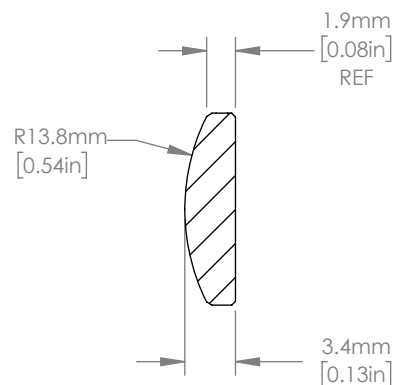
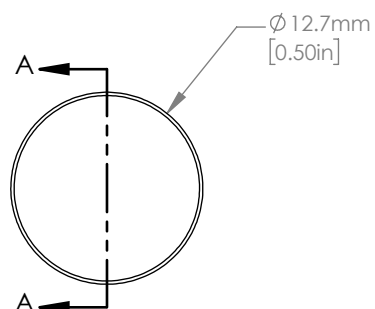




ISOMETRIC VIEW  
SCALE: 2:1



SECTION A-A

NOTES/SPECIFICATIONS:

1. DESIGN WAVELENGTH: 587.6 nm
2. FOCAL LENGTH:  $f=30.1 \text{ mm} \pm 1\%$
3. BACK FOCAL LENGTH(REF):  $bf=27.8 \text{ mm}$
4. CLEAR APERTURE:  $> \phi 11.43 \text{ mm}$
5. SURFACE QUALITY: 20-10 SCRATCH-DIG
6. CENTRATION:  $< 3 \text{ arcmin}$
7. DIAMETER TOLERANCE:  $+0.0/-0.1 \text{ mm}$
8. THICKNESS TOLERANCE:  $\pm 0.1 \text{ mm}$
9. COATING: VAR R $<0.25\%$  PER SURFACE FOR 1550 nm, AOI:  $0^\circ$

FOR INFORMATION ONLY  
NOT FOR MANUFACTURING PURPOSES

|  |      |           |  |               |
|--|------|-----------|--|---------------|
| DRAWING PROJECTION   |      |           | <br><a href="http://www.thorlabs.com">www.thorlabs.com</a>                               |               |
|  | NAME | DATE      |  |               |
| DRAWN  | YB   | 04/JAN/21 | $\phi 12.7 \text{ mm } f=30 \text{ mm}$ FUSED SILICA<br>PLANO CONVEX LENS, -1550 nm COAT |               |
| APPROVAL   | MG   | 12/JAN/21 | MATERIAL   | REV           |
| COPYRIGHT © 2021 BY THORLABS<br><small>VALUES IN PARENTHESIS ARE CALCULATED AND MAY CONTAIN ROUND OFF ERRORS</small> |      |           | UV FUSED SILICA  | A             |
|  |      |           | ITEM #   | APPROX WEIGHT |
|  |      |           | LA4936-1550  | 0.72 g        |