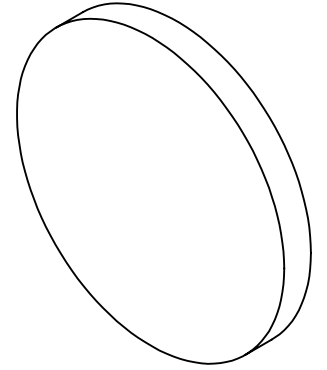
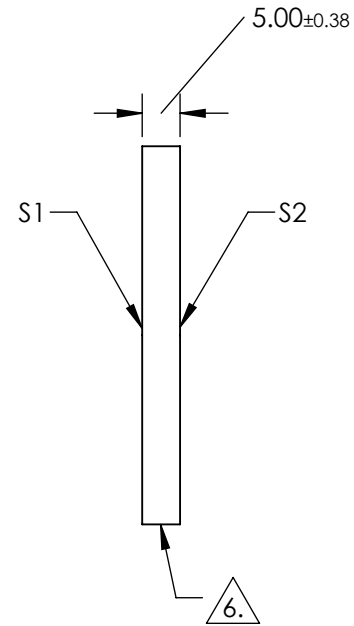
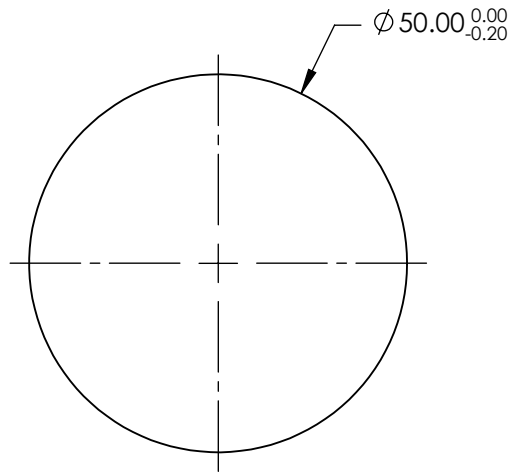


NOTES:

1. SUBSTRATE: Fused Silica (Corning 7980)
2. ROHS: COMPLIANT
3. SURFACE S2 TO BE PARALLEL TO SURFACE S1 TO WITHIN <5 ARCMIN
4. COATING (APPLY ACROSS CLEAR APERTURE)
S1&S2: R(AVG) ≤0.5% @ 600 - 1050nm
5. TRANSMITTED WAVEFRONT DISTORTION: ≤ 1λ

6. FINE GRIND SURFACE



**FOR INFORMATION ONLY:
DO NOT MANUFACTURE
PARTS TO THIS DRAWING**

SPECIFICATIONS SUBJECT TO CHANGE WITHOUT NOTICE
DIMENSIONS ARE FOR REFERENCE ONLY

	S1	S2
SHAPE	PLANO	PLANO
SURFACE QUALITY	60-40	60-40
CLEAR APERTURE	$\phi 45.00$	$\phi 45.00$
BEVEL	PROTECTED AS NEEDED	PROTECTED AS NEEDED

THIRD ANGLE PROJECTION

ALL DIMS IN mm

Edmund Optics®

TITLE 50mm Dia., 5mm Thick NIR I Coated, 1λ Fused Silica Window

DWG NO 19899 SHEET 1 OF 1