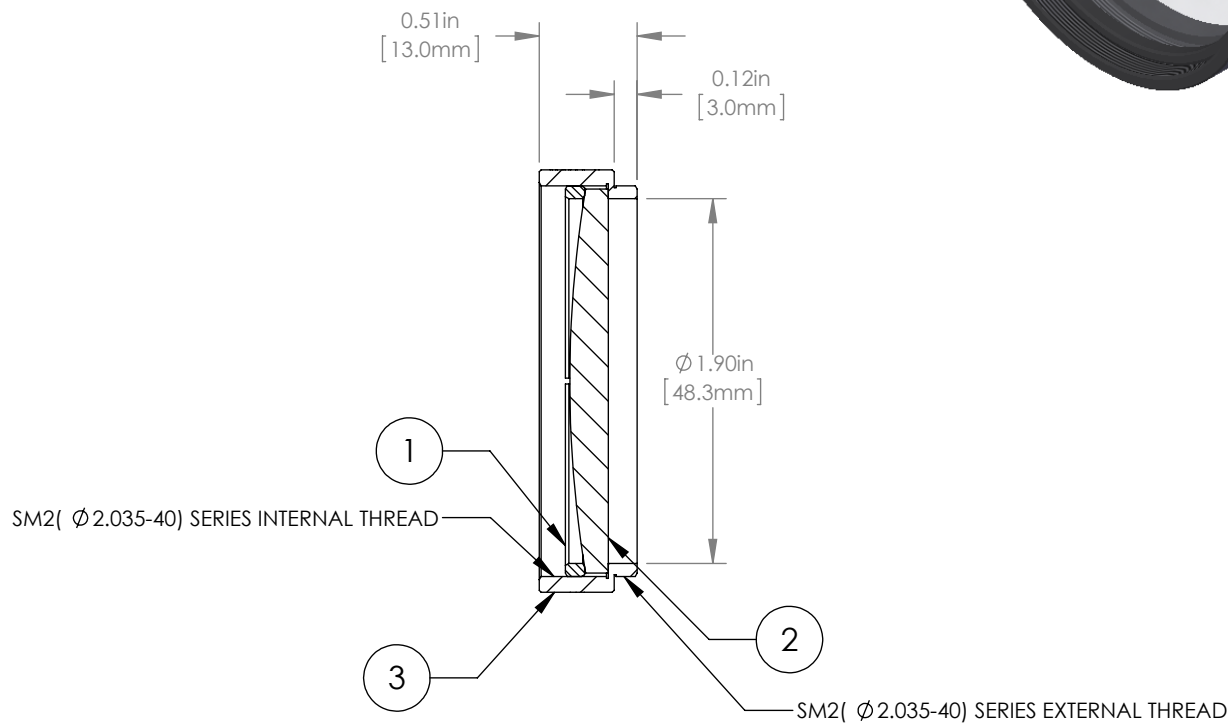
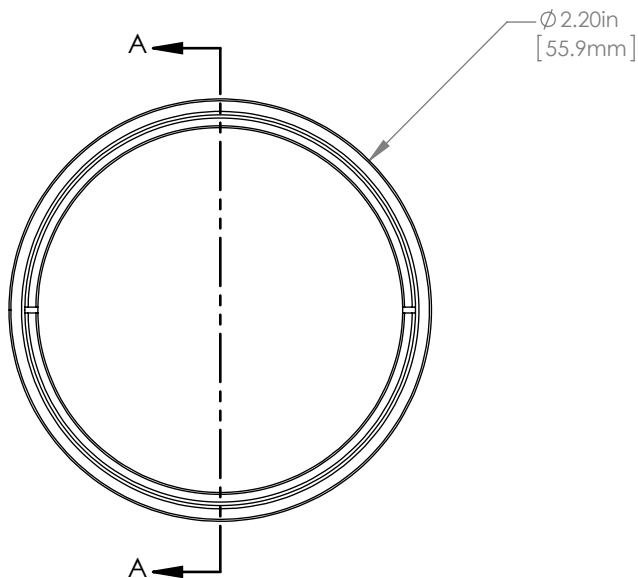


	PART DESCRIPTION	MATERIAL
①	SM2RR	ANODIZED ALUMINUM
②	LA1256-A	N-BK7
③	ENGRAVED HOUSING	ANODIZED ALUMINUM



NOTES/SPECIFICATIONS:

1. DESIGN WAVELENGTH: 633nm
2. FOCAL LENGTH: $f=300.0\text{mm} \pm 1\%$
3. WORKING DISTANCE (REF): 292.8mm
4. CLEAR APERTURE: $> \varnothing 45.72\text{mm}$
5. SURFACE QUALITY: 40-20 SCRATCH-DIG
6. COATING: BBAR $R_{\text{avg}} < 0.5\%$ FROM 350-700nm, AOI: 0°, ON OUTER OPTICAL SURFACES

FOR INFORMATION ONLY
NOT FOR MANUFACTURING PURPOSES

DRAWING PROJECTION			THORLABS www.thorlabs.com $\varnothing 2"$ MOUNTED PLANO-CONVEX LENS, $f=300\text{mm}$, -A COAT	
NAME	DATE			
DRAWN	GG	15/OCT/15	MATERIAL	
APPROVAL	DD	15/OCT/15		
COPYRIGHT © 2015 BY THORLABS			SEE TABLE	
VALUES IN PARENTHESIS ARE CALCULATED AND MAY CONTAIN ROUND OFF ERRORS			ITEM #	APPROX WEIGHT
			LA1256-A-ML	34 g

REV A