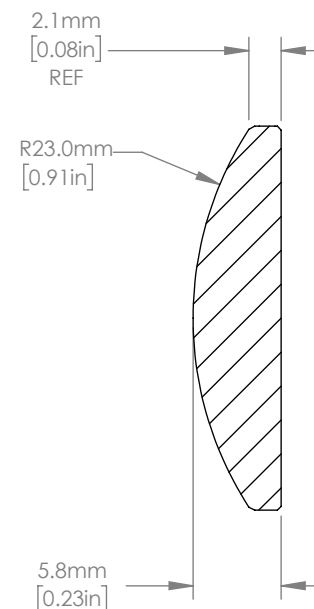
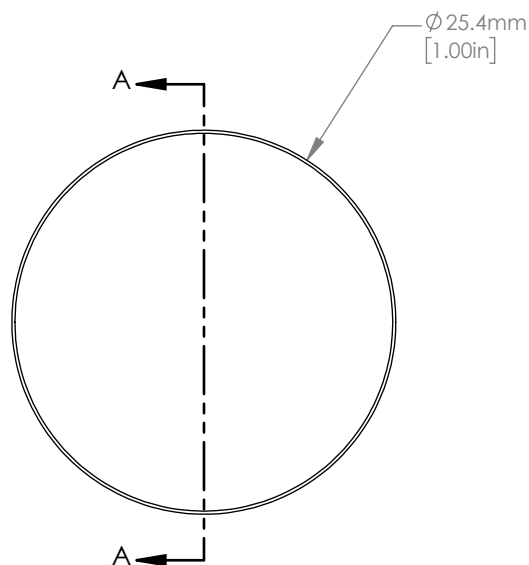




ISOMETRIC VIEW
SCALE: 2:1



SECTION A-A

NOTES/SPECIFICATIONS:

1. DESIGN WAVELENGTH: 587.6 nm
2. FOCAL LENGTH: $f=50.2 \text{ mm} \pm 1\%$
3. BACK FOCAL LENGTH(REF): $bf=46.2 \text{ mm}$
4. CLEAR APERTURE: $> \varnothing 22.86 \text{ mm}$
5. SURFACE QUALITY: 20-10 SCRATCH-DIG
6. CENTRATION: $< 3 \text{ arcmin}$
7. DIAMETER TOLERANCE: $+0.0/-0.1 \text{ mm}$
8. THICKNESS TOLERANCE: $\pm 0.1 \text{ mm}$
9. COATING: VAR R $<0.25\%$ PER SURFACE FOR 532 nm, AOI: 0°

FOR INFORMATION ONLY
NOT FOR MANUFACTURING PURPOSES

DRAWING PROJECTION			 www.thorlabs.com $\varnothing 25.4 \text{ mm } f=50 \text{ mm}$ FUSED SILICA PLANO CONVEX LENS, -532 nm COAT	
NAME	DATE			
DRAWN	YB	28/APR/20	MATERIAL UV FUSED SILICA REV A	
APPROVAL	BW	25/MAY/20		
COPYRIGHT © 2020 BY THORLABS VALUES IN PARENTHESIS ARE CALCULATED AND MAY CONTAIN ROUND OFF ERRORS			ITEM #	APPROX WEIGHT
			LA4148-532	4.42 g