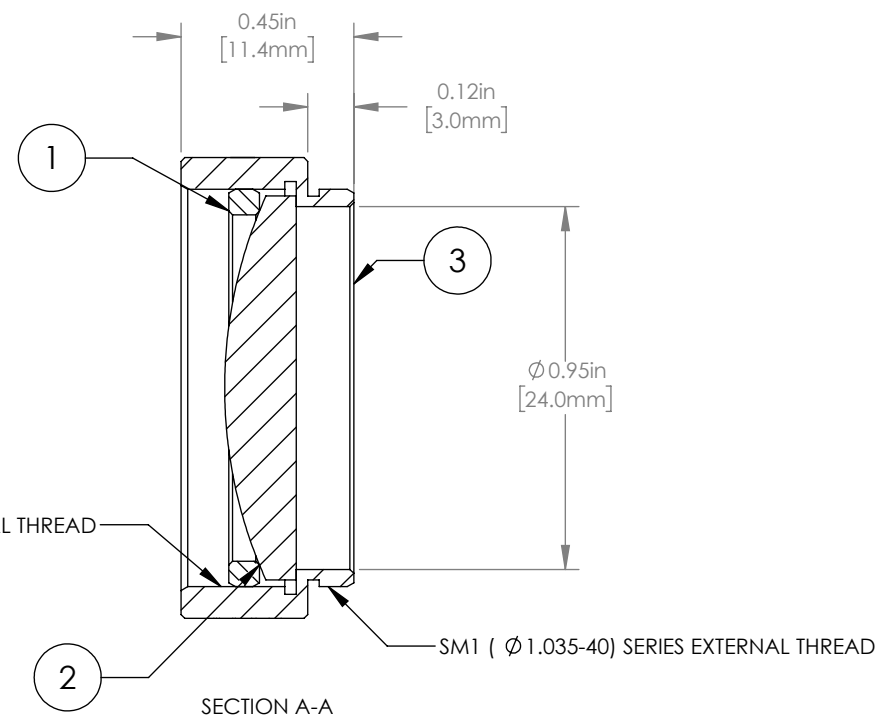
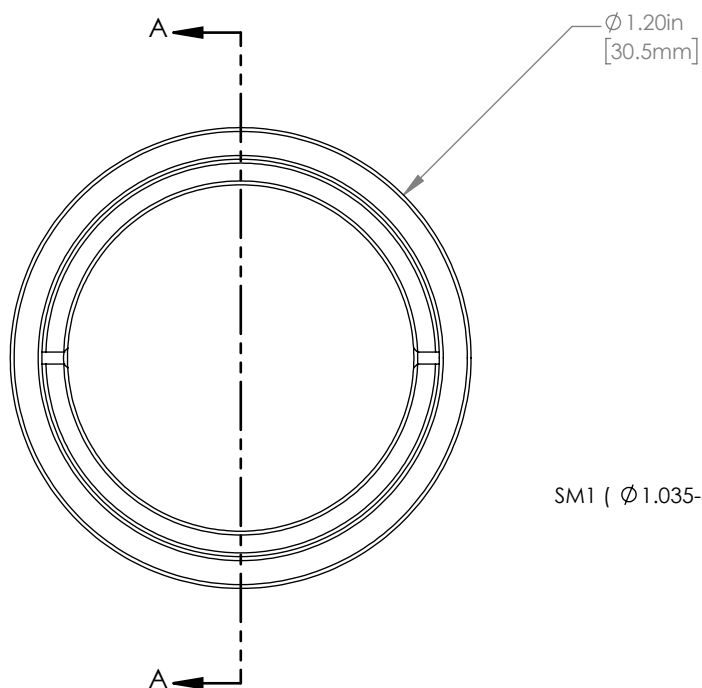


	PART DESCRIPTION	MATERIAL
①	SM1RR	ANODIZED ALUMINUM
②	LA1134-B	N-BK7
③	ENGRAVED HOUSING	ANODIZED ALUMINUM



NOTES/SPECIFICATIONS:

- DESIGN WAVELENGTH: 587.6 nm
- FOCAL LENGTH: $f=59.8\text{ mm} \pm 1\%$
- WORKING DISTANCE (REF): 52.9 mm
- CLEAR APERTURE: $\phi 22.9\text{ mm}$
- SURFACE QUALITY: 40-20 SCRATCH-DIG
- COATING: BBAR $<0.5\%$ FROM 650 nm-1050 nm, 0° AOI, ON BOTH OPTICAL SURFACES

FOR INFORMATION ONLY
NOT FOR MANUFACTURING PURPOSES

DRAWING PROJECTION				THORLABS www.thorlabs.com MOUNTED $\phi 1''$ $f=60\text{ mm}$ PLANO CONVEX LENS, -B COATED	
	NAME		DATE	MATERIAL	
DRAWN	GG		20/JAN/20	SEE TABLE	
APPROVAL	DD		20/JAN/20	REV A	
<small>COPYRIGHT © 2020 BY THORLABS</small>				ITEM #	APPROX WEIGHT
<small>VALUES IN PARENTHESIS ARE CALCULATED AND MAY CONTAIN ROUND OFF ERRORS</small>				LA1134-B-ML	14 g