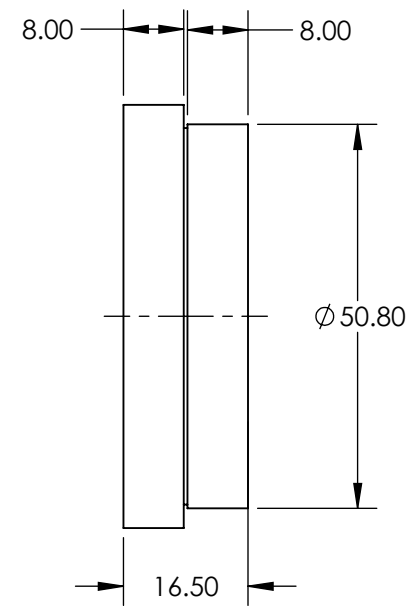
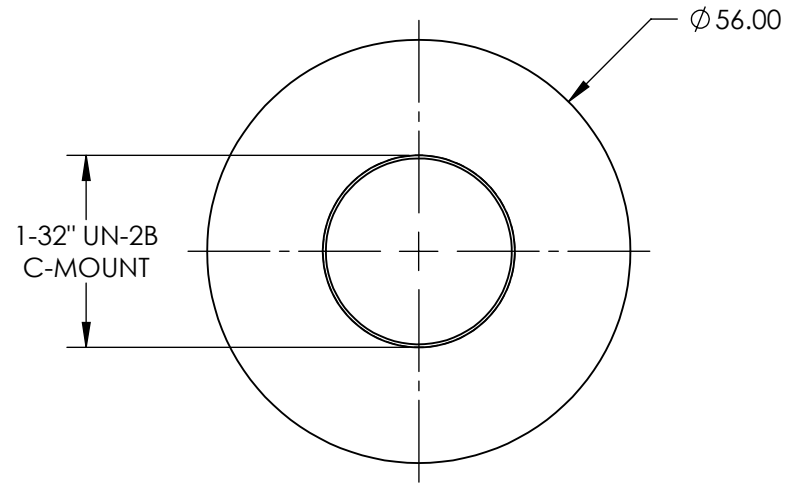
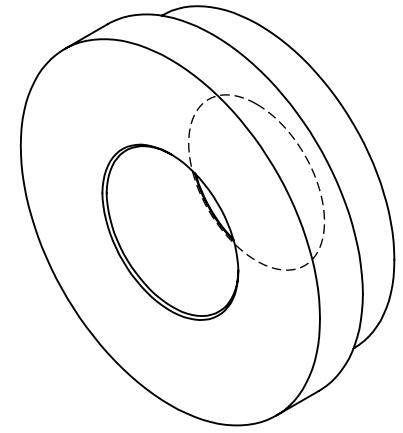


NOTES:

1. MATERIAL:
BLACK ANODIZED ALUMINUM
2. COMPATIBLE MOUNT:
50.8mm DIA. OPTIC MOUNTS



**FOR INFORMATION ONLY:
DO NOT MANUFACTURE
PARTS TO THIS DRAWING**

SPECIFICATIONS SUBJECT TO CHANGE WITHOUT NOTICE
DIMENSIONS ARE FOR REFERENCE ONLY



THIRD ANGLE PROJECTION		TITLE	E-Series C-Mount Adapter	
ALL DIMS IN	mm	DWG NO	18283	SHEET 1 OF 1