

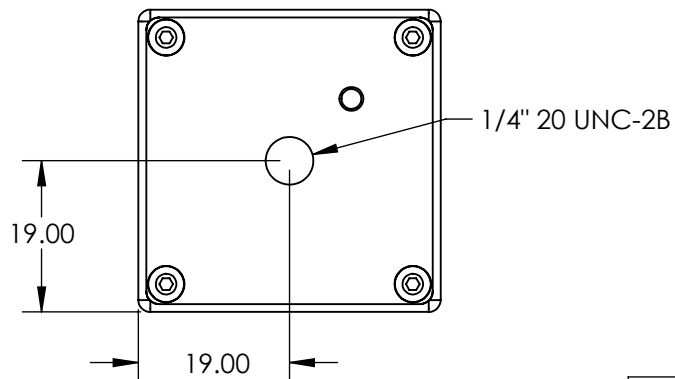
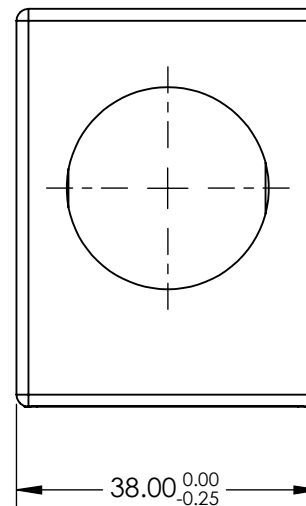
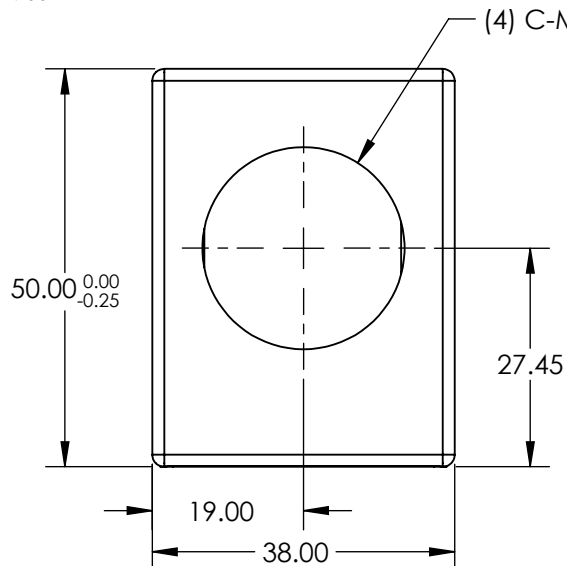
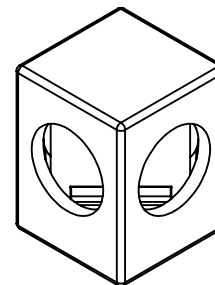
NOTES:

1. COATING (APPLY ACROSS CLEAR APERTURE)

S1: R(abs) 70% ±5% @ 550nm
 R(abs) 70% ±10% @ 400 - 700 nm
 T(abs) 30% ±5% @ 550nm
 T(abs) 30% ±10% @ 400 - 700nm

S2: R(avg) <1.0% @ 400 - 700nm
 R(abs) <2.0% @400 - 700nm

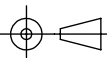
**FOR INFORMATION ONLY:
 DO NOT MANUFACTURE
 PARTS TO THIS DRAWING**



SPECIFICATIONS SUBJECT TO CHANGE WITHOUT NOTICE
 DIMENSIONS ARE FOR REFERENCE ONLY

EO® Edmund Optics®

REV. A	S1	S2
SURFACE QUALITY	60-40	60-40
SURFACE FLATNESS	1λ	1λ

THIRD ANGLE PROJECTION 

ALL DIMS IN mm

TITLE	70R/30T, VIS, C-MOUNTED PLATE BEAMSPLITTER	
DWG NO	49686	SHEET 1 OF 1