

NOTES:

1. SUBSTRATE MATERIAL:  
FUSED SILICA

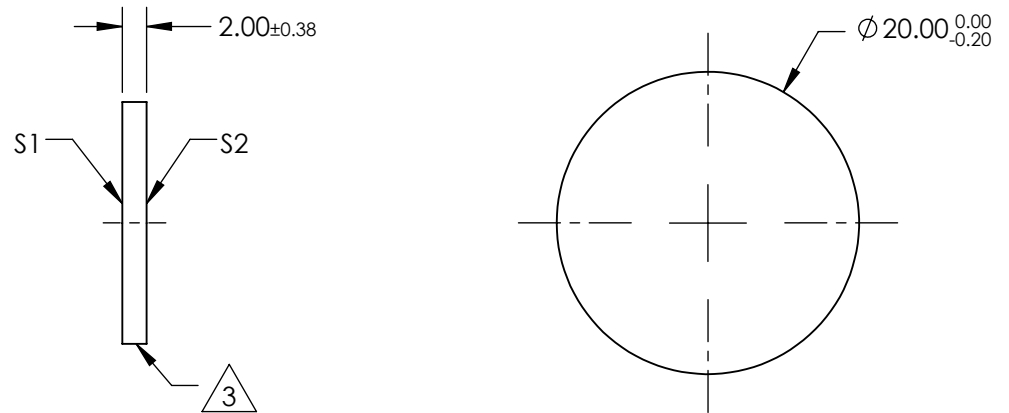
2. COATING (APPLY ACROSS CLEAR APERTURE)

S1: R(abs)= 30% ±5% @ 350nm, 45° AOI  
 R(avg)= 30% ±10% OVER 250 - 450nm, 45° AOI  
 T(abs)= 70% ±5% @ 350nm, 45° AOI  
 T(avg)= 70% ±10% OVER 250 - 450nm, 45° AOI

S2: BBAR (R(avg) <1%, R(abs) <2% OVER 250 - 450nm), 45° AOI

3. EDGES FINE GROUND

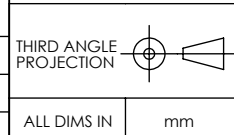
4. ROHS COMPLIANT



**FOR INFORMATION ONLY:  
DO NOT MANUFACTURE  
PARTS TO THIS DRAWING**

SPECIFICATIONS SUBJECT TO CHANGE WITHOUT NOTICE  
DIMENSIONS ARE FOR REFERENCE ONLY

REV. A	S1	S2
SHAPE	PLANO	PLANO
CLEAR APERTURE	Ø17.00	Ø17.00
SURFACE QUALITY	60-40	60-40
SURFACE FLATNESS	1λ	1λ
BEVEL	PROTECTED AS NEEDED	PROTECTED AS NEEDED



**EO**® **Edmund Optics**®

TITLE	Ø20mm, 30R/70T, UV PLATE BEAMSPLITTER		
DWG NO	65924	SHEET	1 OF 1