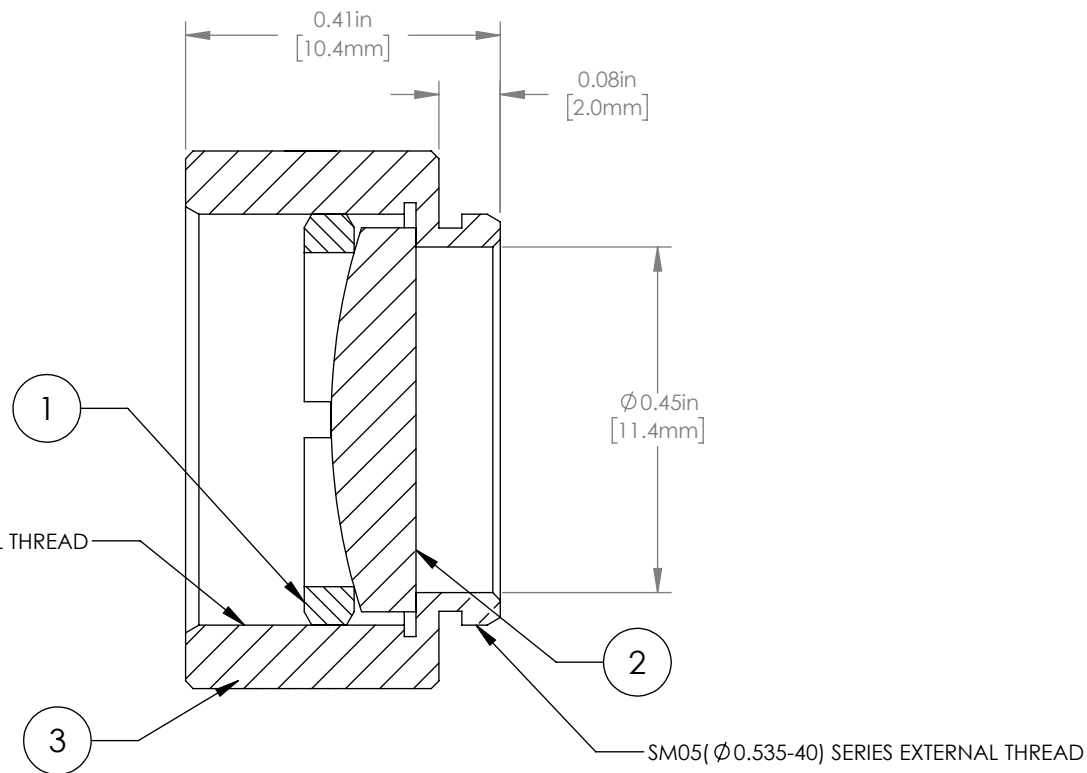
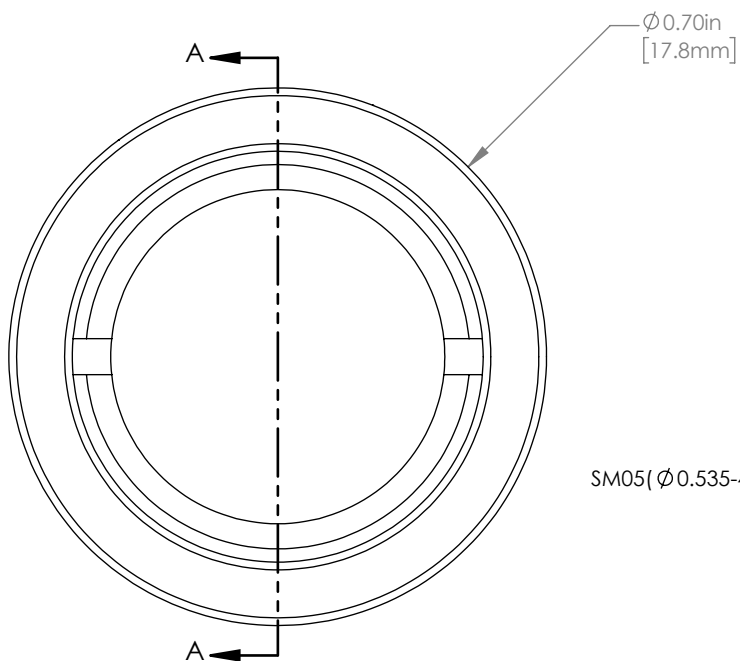
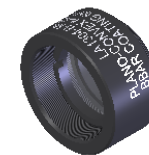


	PART DESCRIPTION	MATERIAL
①	SM05RR	ANODIZED ALUMINUM
②	LA1304-B	N-BK7
③	ENGRAVED HOUSING	ANODIZED ALUMINUM



NOTES/SPECIFICATIONS:

- DESIGN WAVELENGTH: 587.6nm
- FOCAL LENGTH: $f=39.9\text{mm} \pm 1\%$
- WORKING DISTANCE (REF): 35.2mm
- CLEAR APERTURE: $> \phi 11.4\text{mm}$
- SURFACE QUALITY: 40-20 SCRATCH-DIG
- CENTRATION: $< 3\text{arcmin}$
- COATING: BBAR $R_{\text{avg}} < 0.5\%$ FROM 650-1050nm, AOI: 0° ,

FOR INFORMATION ONLY
NOT FOR MANUFACTURING PURPOSES

DRAWING PROJECTION					
	NAME		DATE	THORLABS www.thorlabs.com	
DRAWN	GG		07/SEP/17	$\phi 1/2$ " MOUNTED PLANO CONVEX LENS, $f=40\text{mm}$, -B COAT	
APPROVAL	DD		07/SEP/17	MATERIAL	REV B
COPYRIGHT © 2017 BY THORLABS				SEE TABLE	
VALUES IN PARENTHESIS ARE CALCULATED AND MAY CONTAIN ROUND OFF ERRORS				ITEM #	APPROX WEIGHT
				LA1304-B-ML	4 g