

NOTES:

1. SUBSTRATE:  
SAPPHIRE (AL<sub>2</sub>O<sub>3</sub>)
2. SURFACE S2 TO BE PARALLEL WITH SURFACE S1 TO WITHIN ≤ 3.5 ARCMIN
3. COATING (APPLY ACROSS CLEAR APERTURE)

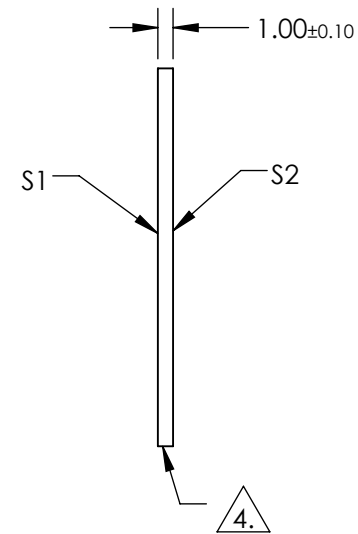
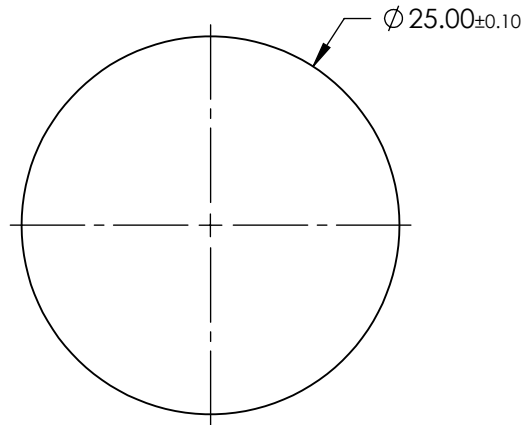
S1 & S2: R(ABS) ≤ 1.5% @ 750 - 800nm  
 R(ABS) ≤ 1.0% @ 800 - 1550nm  
 R(AVG)avg ≤ 0.7% @ 750 - 1550nm



FINE GRIND SURFACE

5. ROHS COMPLIANT

**FOR INFORMATION ONLY:  
DO NOT MANUFACTURE  
PARTS TO THIS DRAWING**



SPECIFICATIONS SUBJECT TO CHANGE WITHOUT NOTICE  
 DIMENSIONS ARE FOR REFERENCE ONLY

|   | S1                   | S2                   |
|---|----------------------|----------------------|
| SHAPE   | PLANO                | PLANO                |
| CLEAR APERTURE                                  | Ø22.50               | Ø22.50               |
| SURFACE FLATNESS                                | 2λ                   | 2λ                   |
| SURFACE QUALITY                                 | 80-50                | 80-50                |
| BIREFRINGENCE (n <sub>o</sub> -n <sub>e</sub> ) | 0.008                | 0.008                |
| BEVEL   | PROTECTIVE AS NEEDED | PROTECTIVE AS NEEDED |

THIRD ANGLE PROJECTION ALL DIMS IN mm

**EO**® **Edmund Optics**®

TITLE: 25mm Dia., 1mm Thick, NIR II AR Coated Sapphire Window

DWG NO: 20955

SHEET 1 OF 1