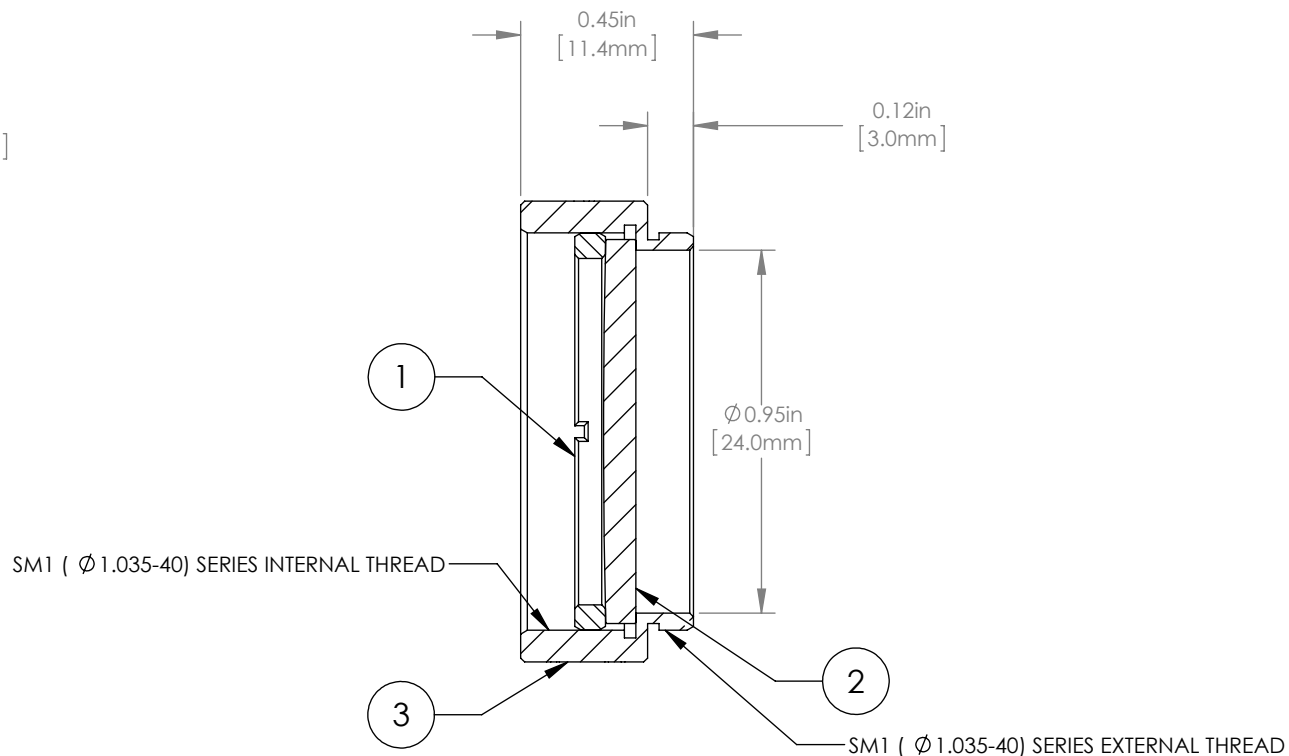
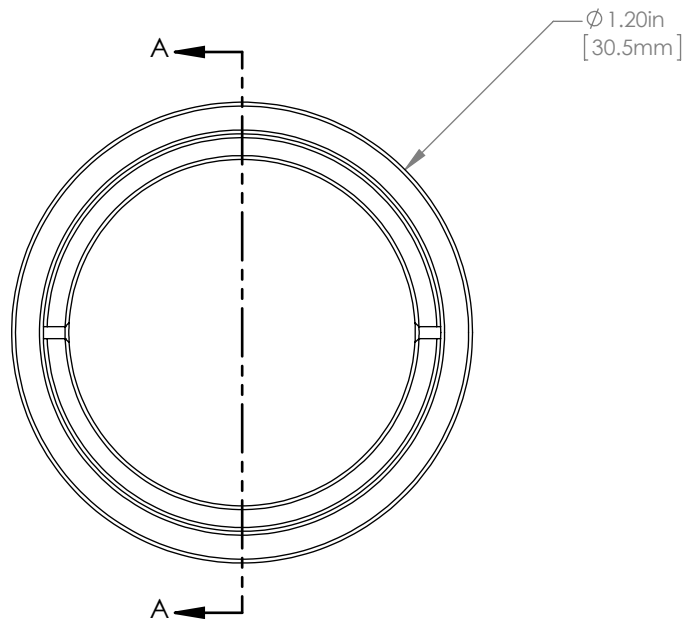


	PART DESCRIPTION	MATERIAL
①	SM1RR	ANODIZED ALUMINUM
②	LA1464-C	N-BK7
③	ENGRAVED HOUSING	ANODIZED ALUMINUM



NOTES/SPECIFICATIONS:

- DESIGN WAVELENGTH: 587.6nm
- FOCAL LENGTH:  $f=996.7\text{mm} \pm 1\%$
- WORKING DISTANCE (REF): 991.5mm
- CLEAR APERTURE:  $> \text{Ø} 22.86\text{mm}$
- SURFACE QUALITY: 40-20 SCRATCH-DIG
- CENTRATION:  $< 3\text{arcmin}$
- COATING: BBAR  $\text{Ravg} < 0.5\%$  FROM 1050-1700nm, AOI:  $0^\circ$ , ON OUTER OPTICAL SURFACES

FOR INFORMATION ONLY  
NOT FOR MANUFACTURING PURPOSES

DRAWING PROJECTION			THORLABS www.thorlabs.com	
	NAME	DATE	$\text{Ø} 1"$ MOUNTED PLANO CONVEX LENS, $f=1000\text{mm}$ , -C COAT	
DRAWN	GG	30/JUN/15		
APPROVAL	DD	30/JUN/15		
COPYRIGHT © 2015 BY THORLABS			MATERIAL	SEE TABLE
VALUES IN PARENTHESIS ARE CALCULATED AND MAY CONTAIN ROUND OFF ERRORS			ITEM #	APPROX WEIGHT
			LA1464-C-ML	8 g

REV  
A